

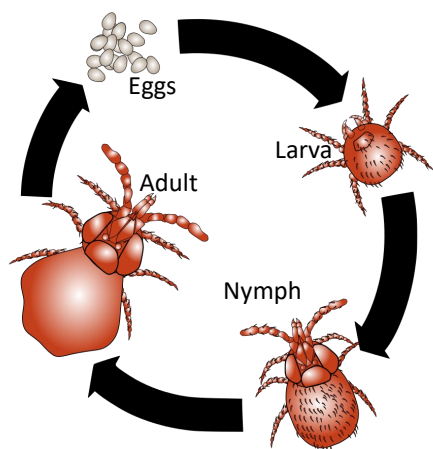


Companion Animal Newsletter - September 2017

HARVEST MITES

The larvae of harvest mites can cause seasonal skin challenges for dogs and cats particularly during late summer and autumn. The six legged harvest mite larva feeds on tissue fluid and may cause considerable itching and discomfort to both dogs and cats. The large orange/yellow larvae are widely distributed throughout the UK. Heavy infestations may be sharply localised—even to the extent of being abundant in one garden and absent from others in the same area.

Harvest Mite Life Cycle



The first active stage in the life cycle of the harvest mite is the six-legged larva - this is the **ONLY** stage which attacks dogs and cats. The larvae congregate in large groups on localised clods of earth, long grass, vegetation such as low bushes and plants. They are active during the day, especially when it is dry and sunny. When they come into contact with any warm blooded animal they swarm on and congregate in areas where there is little hair and the skin is quite thin - areas such as between the toes, around the base of the ear, groin and armpits. Harvest mite larvae feed by thrusting their small hooked fangs into the skin surface. The larvae do not burrow into the skin or suck blood. They inject a fluid containing powerful digestive enzymes which break down the skin cells. The resulting liquefied skin tissue is then sucked back into the digestive system of the larvae.

The larvae can be recognised as small red-orange coloured clusters attached to hairs or skin on the body. The larva will inject and suck for two to three days at the same site until it is full and has increased in size three to four times before dropping

off the host, leaving a red swelling on the skin that can be severely itchy.

The itching will usually develop within 3-6 hours of exposure but can continue for several weeks afterwards. This can lead to rubbing, biting and scratching and in a few cases scurf and hair loss. Skin damaged due to scratching can also become infected with bacteria.

Harvest mite larvae are only active during the day. If you can exercise your pet early in the morning before they become to active, this can help reduce the risk of infestation. Avoiding long grasses and vegetation if possible can also help. Also keep moving - the worst infestations will occur when sitting down or laying down in a sunny spot in the grass. No licensed treatment for harvest mites is available in the UK. However, some particular flea treatments available from your veterinary practice are effective. If you are concerned your pet has been affected by harvest mites, please contact the surgery and we can make you an appointment to have your pet examined.





NEW MEMBER OF THE DALEHEAD TEAM

Louise Thwaite

Receptionist

Louise joins us from an extensive background in customer care and grew up on a small dairy farm in Hellifield, recently moving to a sheep and beef farm in Long Preston with her partner. Louise has always been a keen farmer, especially at lambing time when she enjoys looking after poorly lambs, taking them under her wing and getting them back on their feet again!

In her spare time Louise loves walking her crazy cocker spaniel Honey, socialising with her friends and spending time with her family.

MEDICAL PET SHIRTS



Medical pet shirts for dogs, cats and rabbits offer protection and comfort after operations or in cases of skin disease, whilst allowing the pet to retain its freedom of movement. They effectively provide a barrier to the treatment area and are soft, lightweight and flexible. It can, in some situations, eliminate the need for a plastic collar, body or leg bandage. With a double layer of material around the belly and hind area it enables pads to be inserted in the case of fluid loss, incontinence or when in season. The cat shirt has tailored space underneath the tail allowing

for the use of a litter tray. Popper stud fastenings make them easy to get on and off and they can be washed at 30 degrees. A huge range of sizes are available. They are excellent during post operative recovery, providing protection, comfort and excellent freedom for your pet. Call the surgery to have one fitted today.



SHOW TIME

This year we will be attending:

- **Malham Show on Saturday 26th August**
- **Bentham Show on Saturday 2nd September**
- **Hodder Valley Agricultural Show on Saturday 9th September**

This is a great chance to get involved with your local community and have a great day out with all the family and of course your pet pooch! **Do come and see us on our stand for a catch up, brew and biscuit -**

We look forward to seeing you there!



[/daleheadvetgroup](https://www.facebook.com/daleheadvetgroup)

Check out our website
www.daleheadvetgroup.co.uk for more
information about caring for your pet, special
offers, vet and staff profiles and much more!

